

24/7



Day WK 003



Ticking WK 014



Perpetual WK 013



Hour WK 001



Zenith WK 002



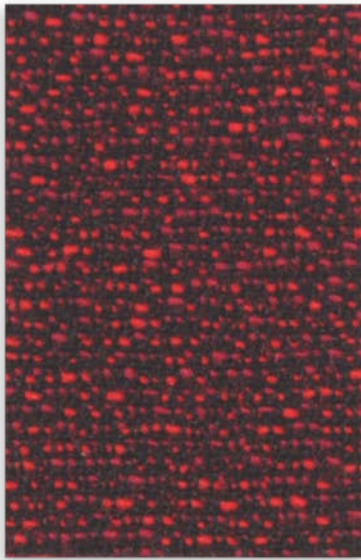
Decade WK 020



Nadir WK 021



Century WK 025



Minute WK 008



Solstice WK 018



Timeless WK 016



Sundown WK 010



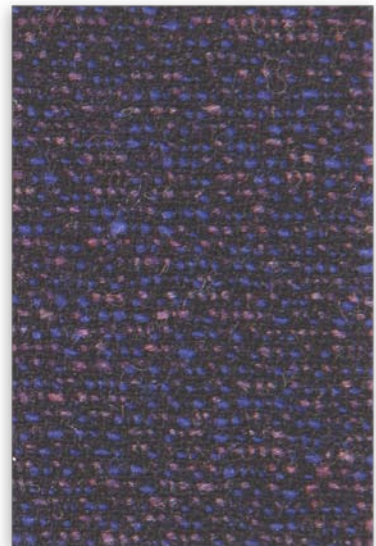
Continual WK 004



Epoch WK 022



Pendulum WK 023



Era WK 009



Night WK 012



Season WK 024



Forever WK 017



Duration WK 007

Tekniske Data

24/7+

Materiale	50% Polyamide, 33% Ren Ny Ull, 10 % Visil, 7% Viskose
Bredde	140 cm ± 2% anvendbar
Vekt	435g pr. m ² ±5%
Lysekthet	6+(ISO 105 - B02:1996)
Slitebevegelser (Martindale)	<500000 slitebevegelser hvis benyttes til vanlig kontorbruk
Anvendelsesområde	møbelstolklassifikator 19898 (DB TI/TI)
Flammesikring	Flammehemmende EN 1021 - 1:1994 (cigarette) EN 1021 - 2:1994 (match) BS 7176 : 1995 Medium Hazard BS 5852 . 1990 Section 4 Ignition Source 5 Flammesikring avhengig av skumtype
Rengjøring	Professionell rensing. Alternativt, rengjøring med fuktig klut eller skumrensing med anerkjent møbelshampo
Fargeavvik	Fargeavvik innenfor kommersielle toleransegrenser kan forekomme

Technical Specifications

24/7+

Composition	50% Polyamide, 33% Pure New Wool, 10 % Visil, 7% Viscose
Width	140 cm ± 2% Usable
Weight	435g pr. m ² ±5%
Light Fastness	6+(ISO 105 - B02:1996)
Abrasion resistance (Martindale)	<500000 cycles within the time of guarantee
Flammability	Flameretardant EN 1021 - 1:1994 (cigarette) EN 1021 - 2:1994 (match) BS 7176 : 1995 Medium Hazard BS 5852 . 1990 Section 4 Ignition Source 5 Flammability performance is dependent on foam used.
Maintenance	Professionally dry clean. Alternatively, wipe clean with a damp cloth or shampoo using upholstery shampoo
Color Matching	Batch to batch variations in shade may occur within commercial tolerance