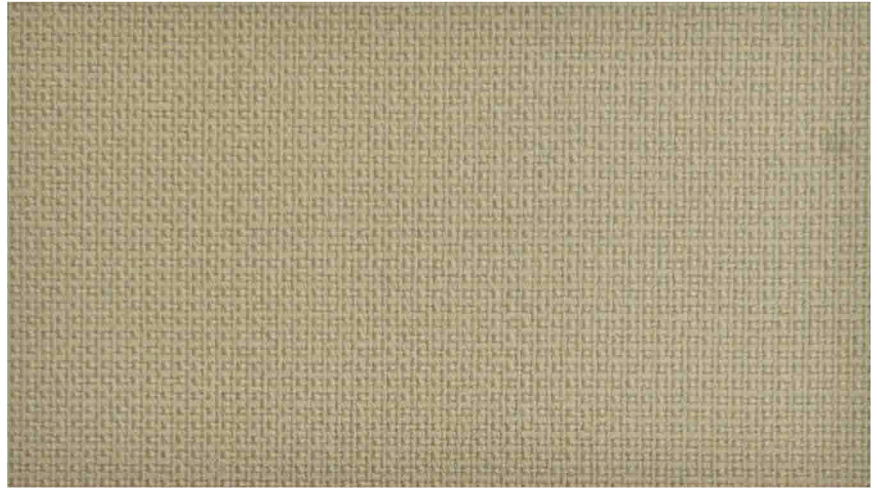
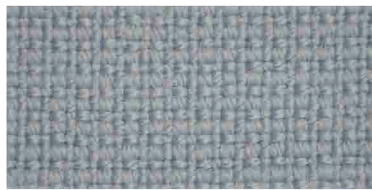


Gabriel Fame
prisgruppe 3



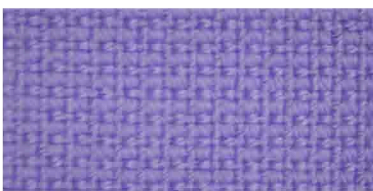
61136



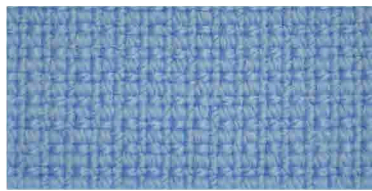
66130



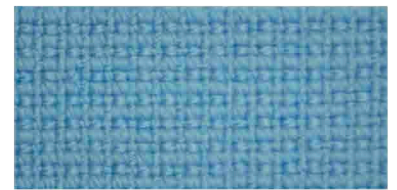
67068



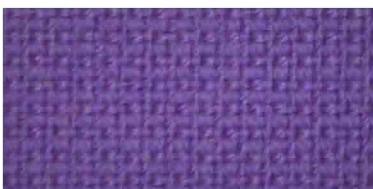
65083



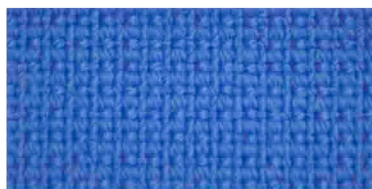
66118



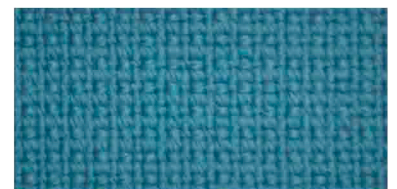
66133



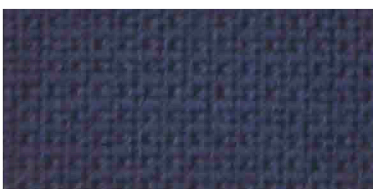
65084



66131



67016



66005



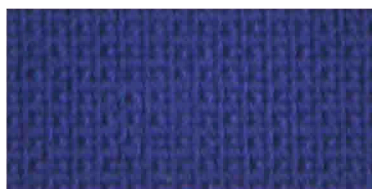
66075



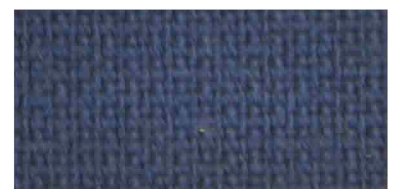
67004



66061

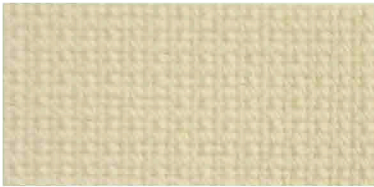


66032



66071

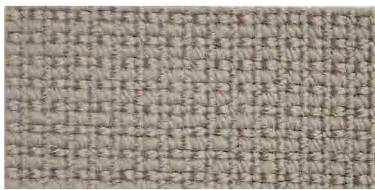
Gabriel Fame prisgruppe 3



66005



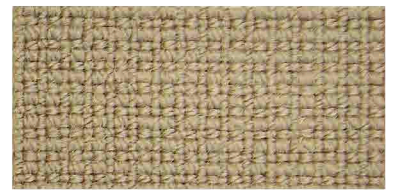
61136



60075



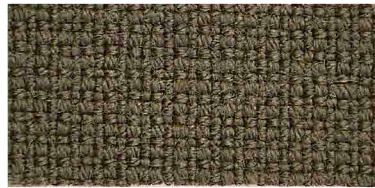
61135



61003



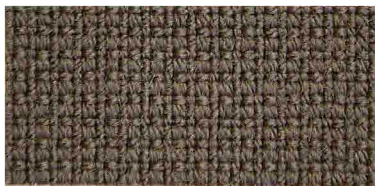
60003



61060



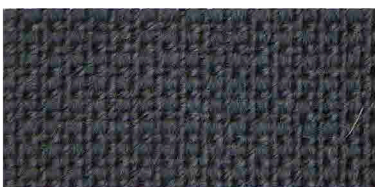
61131



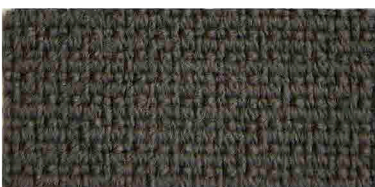
61133



63076



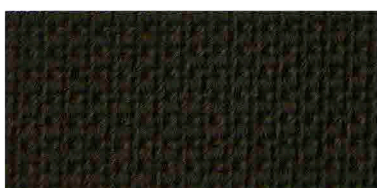
60017



60019



61047



60999

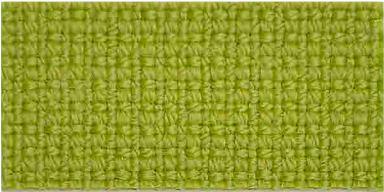


60051

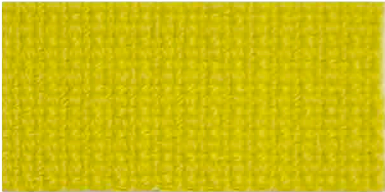


61044

Gabriel Fame prisgruppe 3



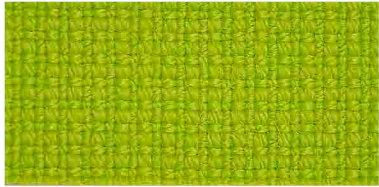
68145



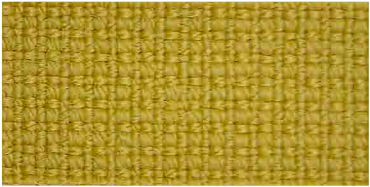
62067



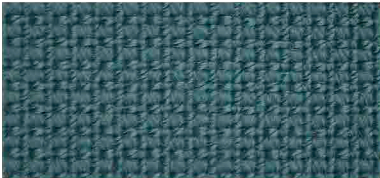
68147



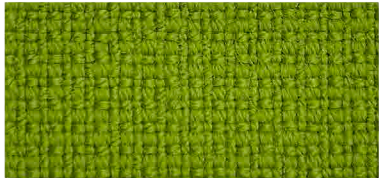
68144



62068



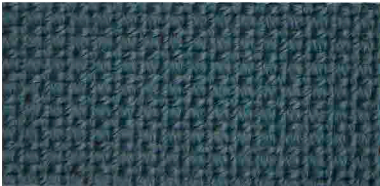
67067



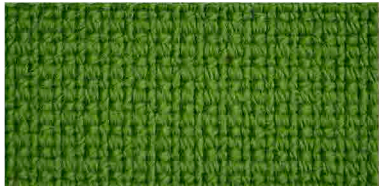
68035



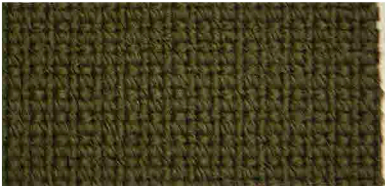
62004



67069



68146



68148



67005

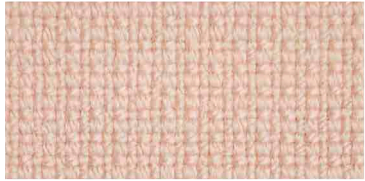


68143



61124

Gabriel Fame prisgruppe 3



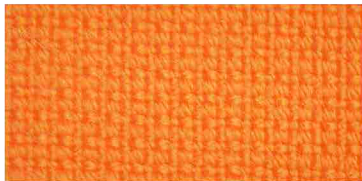
64169



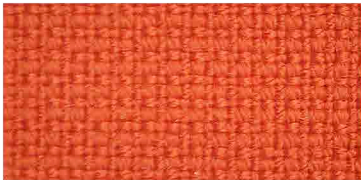
63016



66165



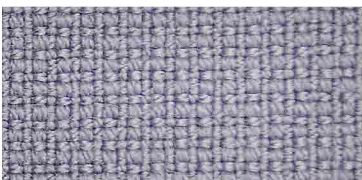
63077



63078



66166



65081



64168



64119



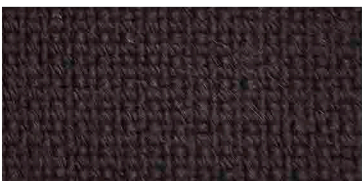
65082



64167



64089



64055



61108



64058



66132

Tekniske Data

GABRIEL FAME

Materiale	Ull - polyamide
Bredde	140 cm
Vekt	630 gr/m ²
Nupping	4
Lysekthet	5-7 Scale 1-8, maks 8 EN ISO 105 - B02
Slitebevegelser	200 000 EN ISO 12947-2 (Martindale)
Flammesikring	BS EN 1021 P1&2 BS 5852 Crib 5 - BS 5852 P1-0&1 Calif. Bull. 117 Sec. E UNI 9175 Class 2.1 -AM 18 - NF D 60-013 IMO A.652 (16) MED sertifikat Flammesikring avhengig av skumtype
Slitefasthet	Våt: 4, Tørr: 5 (ISO 105 -X12)
Rengjøring	P-rens.

Technical Specifications

GABRIEL FAME

Composition	Wool - polyamide
Width	140 cm
Weight	630 gr/m ²
Pilling	4
Light Fastness	5-7 Scale 1-8, maks 8 EN ISO 105 - B02
Abrasion resistance	200 000 EN ISO 12947-2 (Martindale)
Flammability	BS EN 1021 P1&2 BS 5852 Crib 5 - BS 5852 P1-0&1 Calif. Bull. 117 Sec. E UNI 9175 Class 2.1 -AM 18 - NF D 60-013 IMO A.652 (16) MED sertifikat Flame retardant performance is dependent upon the foam used.
Fastness to Rubbing	Wet: 4, Dry: 5 (ISO 105 -X12)
Cleaning	P-cleaning