

# Camira Halcyon - prisgruppe 3



Blossom HPB 01



Linden HPL 01



Aspen HPA 01



Cedar HPC 01



Poplar HPP 01



Aspen HPA 04



Blossom HPB 04



Linden HPL 04



Poplar HPP 04



Cedar HPC 04



Blossom HPB 02



Linden HPL 02



Aspen HPA 02



Cedar HPC 02



Poplar HPP 02



Blossom HPB 05



Linden HPL 05



Aspen HPA 05



Cedar HPC 05



Poplar HPP 05



Aspen HPA 03



Linden HPL 03



Blossom HPB 02



Cedar HPC 03



Poplar HPP 03



Blossom HPB 06



Linden HPL 06



Aspen HPA 06



Cedar HPC 06



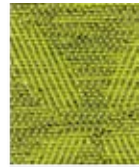
Poplar HPP 06



Blossom HPB 07



Linden  
HPL 07



Aspen  
HPA 07



Cedar  
HPC 07



Poplar  
HPP 07



Blossom HPB 010



Linden  
HPL 10



Aspen  
HPA 10



Cedar  
HPC 10



Poplar  
HPP 10



Aspen HPA 08



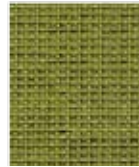
Blossom  
HPB 08



Linden  
HPL 08



Poplar  
HPP 08



Cedar  
HPC 08



Blossom HPB 011



Linden  
HPL 11



Aspen  
HPA 11



Cedar  
HPC 11



Poplar  
HPP 11



Blossom HPB 09



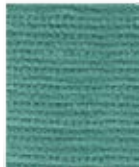
Linden  
HPL 09



Aspen  
HPA 09



Cedar  
HPC 09



Poplar  
HPP 09



Aspen HPA 12



Blossom  
HPB 12



Linden  
HPL 12



Poplar  
HPP 12



Cedar  
HPC 12

## Tekniske Data

	Camira Halcyon
Materiale	100 % polyester med flammehemmende overflate
Bredde	140 cm minimum
Vekt	Aspen/Blossom: 415g/m <sup>2</sup> +5% (5679/lin.m +5%) Cedar: 4659/m <sup>2</sup> +5% (651g/lin.m +5%) Linden: 4259/m <sup>2</sup> t5% (5959/lin.m +5%) Poplar: 4909/m <sup>2</sup> +5% (6869/lin.m +5%)
Lysekthet	6 (SO 105 - 802:2013)
Slitebevegelser (Martindale)	40000 - 100000 slitebevegelser hvis benyttes til vanlig kontorbruk
Flammesikring	BS EN 1021 - 1:2006 (cigarette) BS EN 1021 - 2:2006 (match) BS 5852:2006 Section 4 Ignition Source 5 BS 71 76:2007 Medium Hazard Flammesikring avhengig av skumtype
Slitefasthet	Våt: 4, Tørr: 4 (ISO 105 -X12:2002)
Antibakteriell/anti soppdannelser	AATCC 147:2011
Urin resistens	BS 3424 Part 19 no significant deterioration after 24 hrs
Vannetthet	Hydrostatic head BS 3424 > 1 metre
Rengjøring	BS EN ISO E03 fargeavvik 4 for 10% klorine blanding Støvsuges regelmessig. Rengjøring med fuktig klut eller skumrensing med anerkjent møbelshampo.

## Technical Specifications

	Camira Halcyon
Composition	100% Polyester with flame retardant coating
Width	140 cm minimum
Weight	Aspen/Blossom: 415g/m <sup>2</sup> +5% (5679/lin.m +5%) Cedar: 4659/m <sup>2</sup> +5% (651g/lin.m +5%) Linden: 4259/m <sup>2</sup> t5% (5959/lin.m +5%) Poplar: 4909/m <sup>2</sup> +5% (6869/lin.m +5%)
Light Fastness	6 (SO 105 - 802:2013)
Abrasion resistance (Martindale)	40000-100000 cycles within the time of guarantee (details available)
Flammability	BS EN 1021 - 1:2006 (cigarette) BS EN 1021 - 2:2006 (match) BS 5852:2006 Section 4 Ignition Source 5 BS 71 76:2007 Medium Hazard
Fastness to Rubbing	Wet: 4, Dry: 4 (ISO 105 -X12:2002)
Anti-microbial / Anti-fungal	AATCC 147:2011
Urea resistance	BS 3424 Part 19 no significant deterioration after 24 hrs
Waterproof	Hydrostatic head BS 3424 > 1 metre
Cleaning	BS EN ISO E03 colour change 4 for 10% chlorine solution Vacuum regularly. Wipe with a damp cloth use proprietary upholstery shampoo.